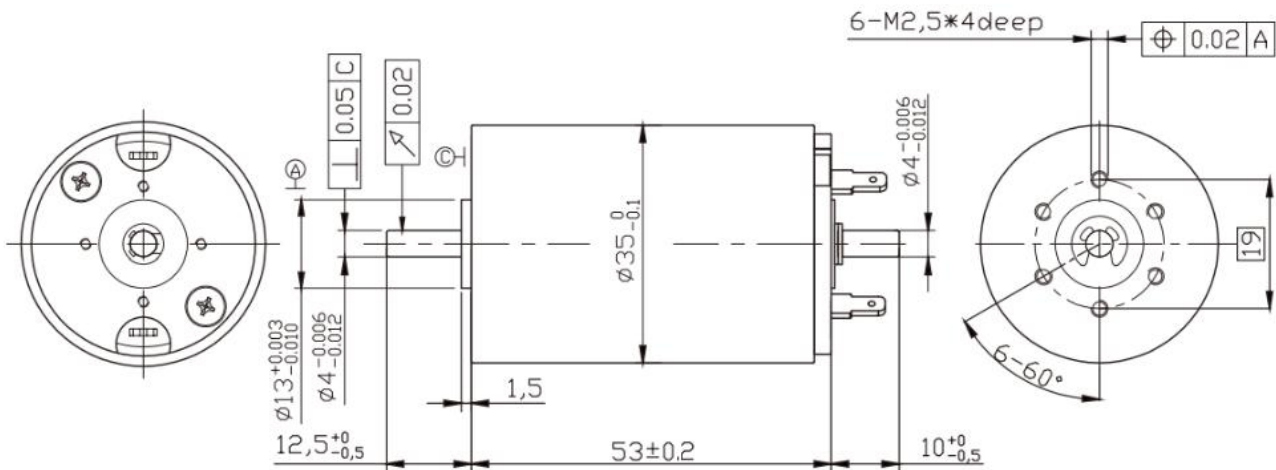


Φ35mm Coreless Brushed DC Motor (Φ35 L53mm) 30-70watt



Motor Data

Values at Nominal

		35531212	35532478	35534876
1 Nominal voltage	V	12	24	48
2 Nominal speed	rpm	10736	6864	6498
3 Nominal current(Max.continuous current)	A	3.55	1.55	0.95
4 Nominal torque(Max.continuous torque)	mNm	29.65	41.47	53.18

At No Load

5 No-load speed	rpm	12200	7800	7600
6 No-load current	mA	350	120	60

At Max.Efficiency

7 Max. efficiency	%	78.5	81.0	81.3
8 Speed	rpm	10980	7098	6916
9 Current	A	3.015	1.189	0.613
10 Torque	mNm	24.7	31.1	33.0

At Max.Output Power

11 Max. output power	W	78.9	70.6	73.0
12 Speed	rpm	6100	3900	3800
13 Current	A	13.7	6.1	3.1
14 Torque	mNm	123.5	172.8	183.4

At Stall

15 Stall current	A	27	12	6.2
16 Stall torque	mNm	247.1	345.6	366.7

Characteristics

17 Terminal resistance	Ω	0.44	2.00	7.74
18 Terminal inductance	mH	0.084	0.500	2.200
19 Torque constant	mNm/A	9.27	29.09	59.73
20 Speed constant	rpm/V	1016.7	325	158.3
21 Speed / torque gradient	rpm/mNm	49.4	22.6	20.7
22 Mechanical time constant	ms	16.57	9.95	9.34
23 Rotor inertia	gcm ²	32.04	42.08	43.3

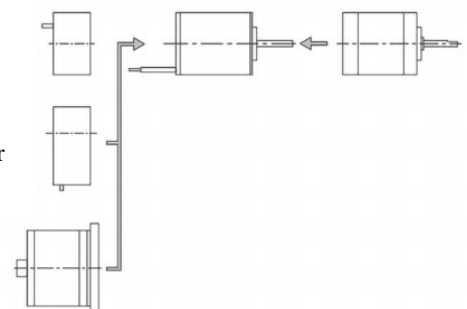
Mechanical Data

24 Bearing type	Ball bearing
25 Axial clearance under axial load	0-0.1mm
26 Radial clearance	≤0.14mm
27 Number of pole pairs	1
28 Number of phases	13
29 Typical noise level	≤48dB
30 Weight	252g

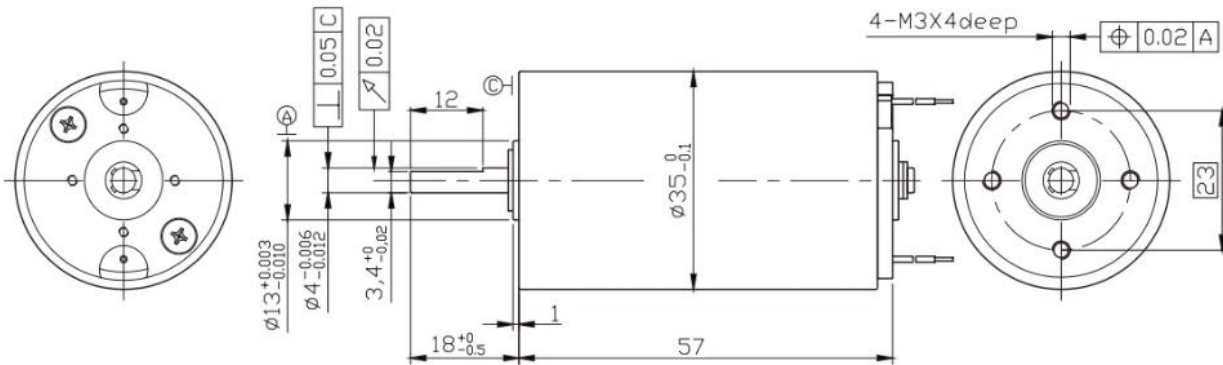
System

Optional Parts:

- Planetary gearhead
- Photoelectric encoder
- Magnetolectric encoder
- Brake



Φ35mm Coreless Brushed DC Motor (Φ35 L57mm) 20-105watt



Motor Data

Values at Nominal

		35571265	35572481	35574868
1 Nominal voltage	V	12	24	48
2 Nominal speed	rpm	5558	7290	5134
3 Nominal current(Max.continuous current)	A	1.52	1.90	0.67
4 Nominal torque(Max.continuous torque)	mNm	23.78	49.63	41.3

At No Load

5 No-load speed	rpm	6500	8100	6800
6 No-load current	mA	150	130	50

At Max.Efficiency

7 Max. efficiency	%	76.6	83.6	74.2
8 Speed	rpm	5785	7452	5984
9 Current	A	1.19	1.544	0.356
10 Torque	mNm	18	39.7	20.2

At Max.Output Power

11 Max. output power	W	27.9	105.2	30
12 Speed	rpm	3250	4050	3400
13 Current	A	4.9	9	1.3
14 Torque	mNm	82	248.2	84.3

At Stall

15 Stall current	A	9.6	17.8	2.6
16 Stall torque	mNm	164	496.3	168.6

Characteristics

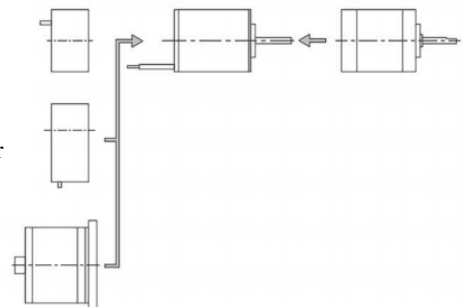
17 Terminal resistance	Ω	1.25	1.35	18.46
18 Terminal inductance	mH	0.170	0.173	2.600
19 Torque constant	mNm/A	17.35	28.09	66.11
20 Speed constant	rpm/V	541.7	337.5	141.7
21 Speed / torque gradient	rpm/mNm	39.6	16.3	40.3
22 Mechanical time constant	ms	16.16	5.32	17.54
23 Rotor inertia	gcm ²	38.93	31.15	41.52

Mechanical data

24 Bearing type	Ball bearing
25 Axial clearance under axial load	0-0.1mm
26 Radial clearance	≤0.14mm
27 Number of pole pairs	1
28 Number of phases	7
29 Typical noise level	≤43dB
30 Weight	278g

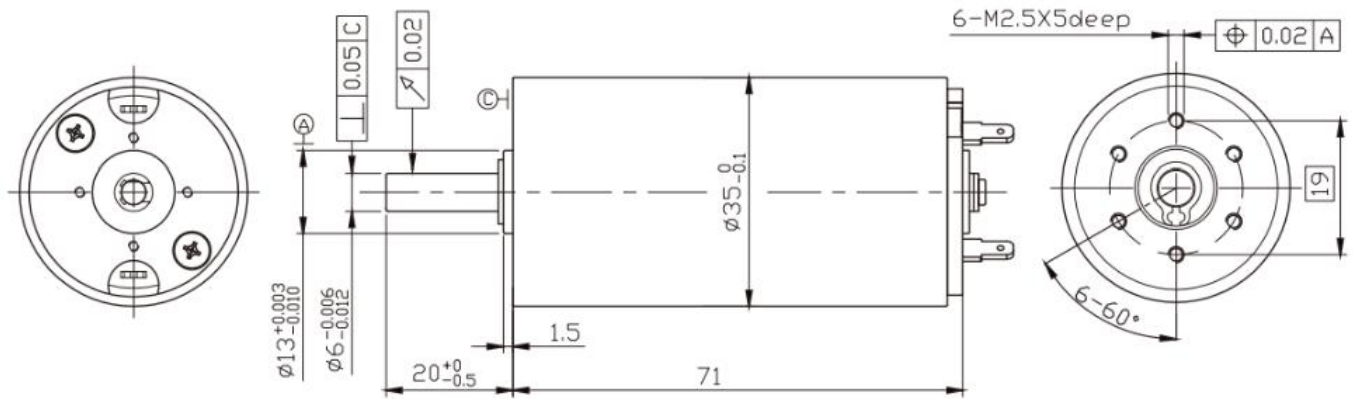
System

Optional Parts:
 -Planetary gearhead
 -Photoelectric encoder
 -Magnetoelectric encoder
 -Brake





Φ35mm Coreless Brushed DC Motor (Φ35 L71mm) 50-280watt



Motor Data

Order number

Values at Nominal		35711274	35711271	35711866	35712479	35714876
1 Nominal voltage	V	12	15	18	24	48
2 Nominal speed	rpm	6697	6497	6039	7229	6118
3 Nominal current(Max.continuous current)	A	7.47	4.23	3.32	4.22	2.17
4 Nominal torque(Max.continuous torque)	mNm	110.98	81.76	82.35	117.62	125.69

At No Load

5 No-load speed	rpm	7400	7100	6600	7900	7600
6 No-load current	mA	280	160	150	150	80

At Max.Efficiency

7 Max. efficiency	%	88.2	88.8	87.8	89.1	88
8 Speed	rpm	6993	6710	6237	7466	7144
9 Current	A	4.445	2.791	2.204	2.782	1.335
10 Torque	mNm	64.3	52.9	53.3	76.1	75.4

At Max.Output Power

11 Max. output power	W	226.3	178.8	167.4	286.2	250
12 Speed	rpm	3700	3550	3300	3950	3800
13 Current	A	38.1	24.1	18.8	24.1	11
14 Torque	mNm	584.1	481	484.4	691.9	528.5

At Stall

15 Stall current	A	76	48	37.5	48	21
16 Stall torque	mNm	1168.2	961.9	968.8	1383.8	1256.9

Characteristics

17 Terminal resistance	Ω	0.16	0.31	0.48	0.5	2.3
18 Terminal inductance	mH	0.050	0.120	0.170	0.190	0.800
19 Torque constant	mNm/A	15.43	20.11	25.94	28.92	60.1
20 Speed constant	rpm/V	616.7	473.3	366.7	329.2	158.3
21 Speed / torque gradient	rpm/mNm	6.3	7.4	6.8	5.7	6
22 Mechanical time constant	ms	5.31	5.87	5.43	4.48	5.06
23 Rotor inertia	gcm ²	79.98	76.01	76.06	79.5	79.98

Mechanical data

24 Bearing type	Ball bearing
25 Axial clearance under axial load	0-0.1mm
26 Radial clearance	≤ 0.14 mm
27 Number of pole pairs	1
28 Number of phases	13
29 Typical noise level	≤ 45 dB
30 Weight	360g

System

- Optional Parts:
- Planetary gearhead
 - Photoelectric encoder
 - Magnetolectric encoder
 - Brake

