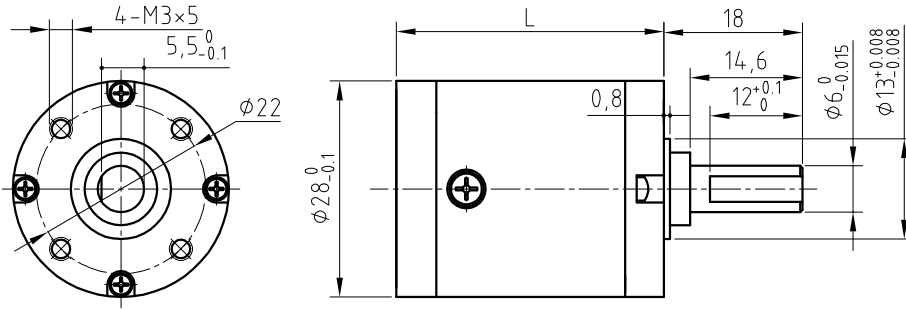


PLANETARY GEARHEAD MPG28

● 外形尺寸 APPEARANCE SIZE



外壳材料 Housing material	金属 steel
齿轮材料 Gearwheel material	金属 steel ①
输出轴承型式 Bearing at output	滚动轴承 Ball bearings
径向负载 Radial load (10mm from flange)	≤ 10 Kgf
轴向负载 shaft axial load	≤ 6 Kgf
径向间隙 Radial play of shaft	≤ 0.04 mm
轴向间隙 Thrust play of shaft	≤ 0.4 mm
背隙（无负载时） Backlash, at no-load	$\leq 2^\circ$
连续运行时最高允许输入转速 Max permissible input speed at continuous working	≤ 50000 rpm ②
工作温度范围 Operating temperature range	$-60 \sim 100^\circ\text{C}$, $-30 \sim 140^\circ\text{C}$

● 标准减速比型式 Gearboxes Specifications

减速比(部分) Reduction ratio (part)	额定允许负载 rated tolerance torque	瞬间允许负载 Max momentary tolerance torque	效率 Efficiency	L (mm)
4.4, 5.25, 6.7, 8.3	15.5Kgf-cm	46.5Kgf-cm	93%	28.4
15.1, 16.9, 18, 19.4, 20.1, 23.1 25.6, 27.6, 29.3, 31.8, 35, 36.5 43.5, 55.2, 68.7	21Kgf-cm	63Kgf-cm	86%	34.7
61.7, 77.1, 87.6, 100.6, 109, 120 125, 129, 134.1, 139.8, 144.7, 149.1, 154, 160.4, 166.8, 183.8 191.4, 211.7, 228.4, 233.3, 243 264.5, 290, 368.2, 457.7, 568.8	26Kgf-cm	78Kgf-cm	80%	41
335.9, 344.8, 373.4, 375.5 385.5, 411.4, 417.4, 428.5, 431 447.2, 460, 466.7, 479.2, 494.8 511.3, 528, 535.7, 567.9, 571.7 590.3, 630, 639.2, 656.2, 677.6 705.8, 733.7, 749.6, 759.7, 800 811.7, 833.3, 842.1, 860.4, 894.4 931.7, 964.7, 994.3, 1005, 1027 1036, 1069, 1112, 1136, 1158, 1199 1236, 1276, 1304, 1329, 1382, 1523 1556, 1586, 1755, 1892, 1933, 1975 2014, 2403, 2455, 3051, 3792, 4713	31Kgf-cm	93Kgf-cm	75%	47.3

① —— 根据受力，行星轮可选用塑料。

Planet gears can be plastic according to torque.

② —— 高转速时齿轮箱长度非标。

Gearbox length is nonstandard at high speed.