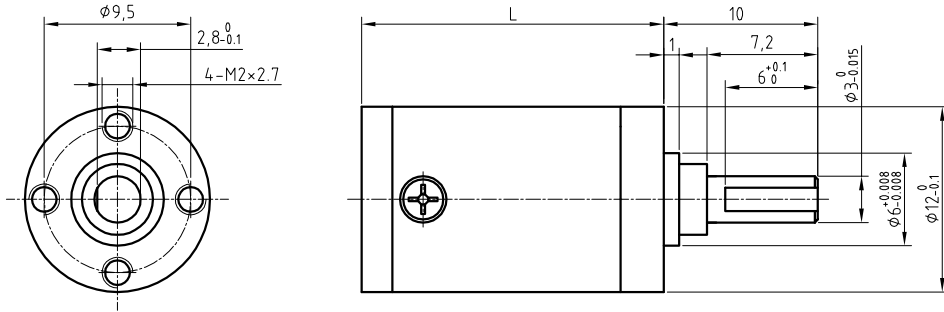


# PLANETARY GEARHEAD MPG12

## ● 外形尺寸 APPEARANCE SIZE



外壳材料 Housing material	金属 steel
齿轮材料 Gearwhddl material	金属 steel ①
输出轴承型式 Bearing at output	滚动轴承 Ball bearings
径向负载 Radial load (10mm from flange)	$\leq 5$ Kgf
轴向负载 shaft axial load	$\leq 3$ Kgf
径向间隙 Radial play of shaft	$\leq 0.04$ mm
轴向间隙 Thrust play of shaft	$\leq 0.4$ mm
背隙（无负载时） Backlash,at no-load	$\leq 2^\circ$
连续运行时最高允许输入转速 Max permissible input speed at continuous working	$\leq 42000$ rpm ②
工作温度范围 Operating temperature range	$60 \sim 100^\circ\text{C}$ , $-30^\circ\text{C} \sim 140^\circ\text{C}$

## ● 标准减速比型式 Gearboxes Specifications

减速比(部分) Reduction ratio (part)	额定允许负载 rated tolerance torque	瞬间允许负载 Max momentary tolerance torque	效率 Efficiency	L (mm)
3.6, 4.9	1.8Kgf-cm	5.4Kgf-cm	93%	16.1
13, 17.6, 24	2.4Kgf-cm	7.2Kgf-cm	86%	19.6
46.7, 63.5, 86.4, 117.6	3.0Kgf-cm	9.0Kgf-cm	80%	23.1
168, 228.6, 311.2, 423.5 576.5	3.6Kgf-cm	10.8Kgf-cm	75%	26.6
604.7, 823, 1120.2, 1524.7, 2075.3, 2824.8	3.6Kgf-cm	10.8Kgf-cm	70%	30.1

①—— 根据受力，行星轮可选用塑料。 Planet gears can be plastic according to torque.

②—— 高转速时齿轮箱长度非标。 Gearbox length is nonstandard at high speed.